

GRASSO RC611 NH3 PLANT

Compressors:

Brand: Grasso
Type: RC 611
Capacity p/c: 440 kW at -7 °C/+35 °C
Electromotor: 132 kW at 1475 RPM (With pulley 865 RPM)
Refrigerant: NH3 (ammonia)
Remarks: - On steel base frame - High pressure oil pump
- Oil separator, 312 ltr. - Pressure safety switches
- Unloaded start - Capacity control
Pieces: 6

Evaporators:

Brand: Goedhart
Type: PLK 16x9-4800/60x60-8
Capacity: 81,8 kW
Refrigerant: NH3 (ammonia)
Defrosting: Hot Gas
Nr. of fans: 3
Fan space: 8 mm
Fan info: 1,4 kW / 940 RPM
Air flow: 56.000 m³/h
Surface flow: 604 m²
Air through: 33 m.
Sizes: 5350x2900x1200 mm (LxWxH)
Weight: 3.000 kg per piece
Pieces: 23

Brand: Goedhart
Type: PLK 16x9-4200/60x60-8
Capacity: 72 kW
Refrigerant: NH3 (ammonia)
Defrosting: Hot Gas
Nr. of fans: 3
Fan space: 8 mm
Fan info: 1,55 kW / 940 RPM
Air flow: 50.000 m³/h
Surface flow: 558 m²
Air through: 33 m.
Sizes: 4780x2900x1200 mm (LxWxH)
Weight: 2.700 kg per piece
Pieces: 12

Including:

Control station;

Each evaporator has a control station installed, which includes the following;

- On the liquid injection: Control Valve, Solenoid Valve, Filter, Non-return Valve, Stop Valve
- On the suction connection: Solenoid Valve, Valve
- On the hot gas injection: Non-return Valve, Solenoid Valve, Filter, Stop Valve

All components of this control station are separateable through Grasso hand valves. Each evaporator is equipped with an end defrost thermostat.

Cooling Towers:

Brand: Baltimore
Type: FXT-266R
Capacity p/c: 1.220 kW
Refrigerant: NH3 (ammonia)
T= income: 32 °C
T= outcome: 27 °C
T= wet bulb: 22 °C
Nr. of fans: 2
Air flow: 143.400 m³/h
Sizes: 5600x2220x2540 mm (LxWxH)
Oper. Weight: 5.565 kg per piece
Pieces: 3

Including two horizontal closed 'Shell and Tube' Condensers:

Brand: Quiri
Type: CDHA 680/4/60-4PASS
Capacity p/c: 1400 kW
Refrigerant: NH3 (ammonia)
Cond. Temp.: 35°C
Water inlet: 27°C
Water outlet: 32°C
Water flow: 250 m³/h
Sizes: 6650x990 mm (LxØ)
Weight: 7.550 kg per piece
Pieces: 3

Including four (one as spare) Waterpumps incl. Electromotor:

Brand: SIHI
Type: NOWA 150/32A – Ø 275 B
Capacity p/c: 1400 kW
Height Q: 23 mwk
Electromotor: 18,5 kW (direct driven)
NPSH: 3,2 mwk
RPM: 1475 t/min
Pieces: 4 (1 as spare)
Including: 1x Watertank (4000x800 mm LxØ)

NH3 Separator:

Brand: Axima
Contents: 22.800 ltr.
Refrigerant: NH3 (ammonia)
Sizes: 6000x2100 mm (LxØ)
Including: - Valves - 2x High pressure Floaters
Remarks: Horizontal model
Pieces: 1

Including NH3 pumps:

Brand: Witt
Type: GP51
Pieces: 6

Including:

- Control panel which are consisting off;
- Compressors regulation
- Evaporators regulation
- Cooling Towers regulation
- Relais
- S5-Simatic-Siemens PLC

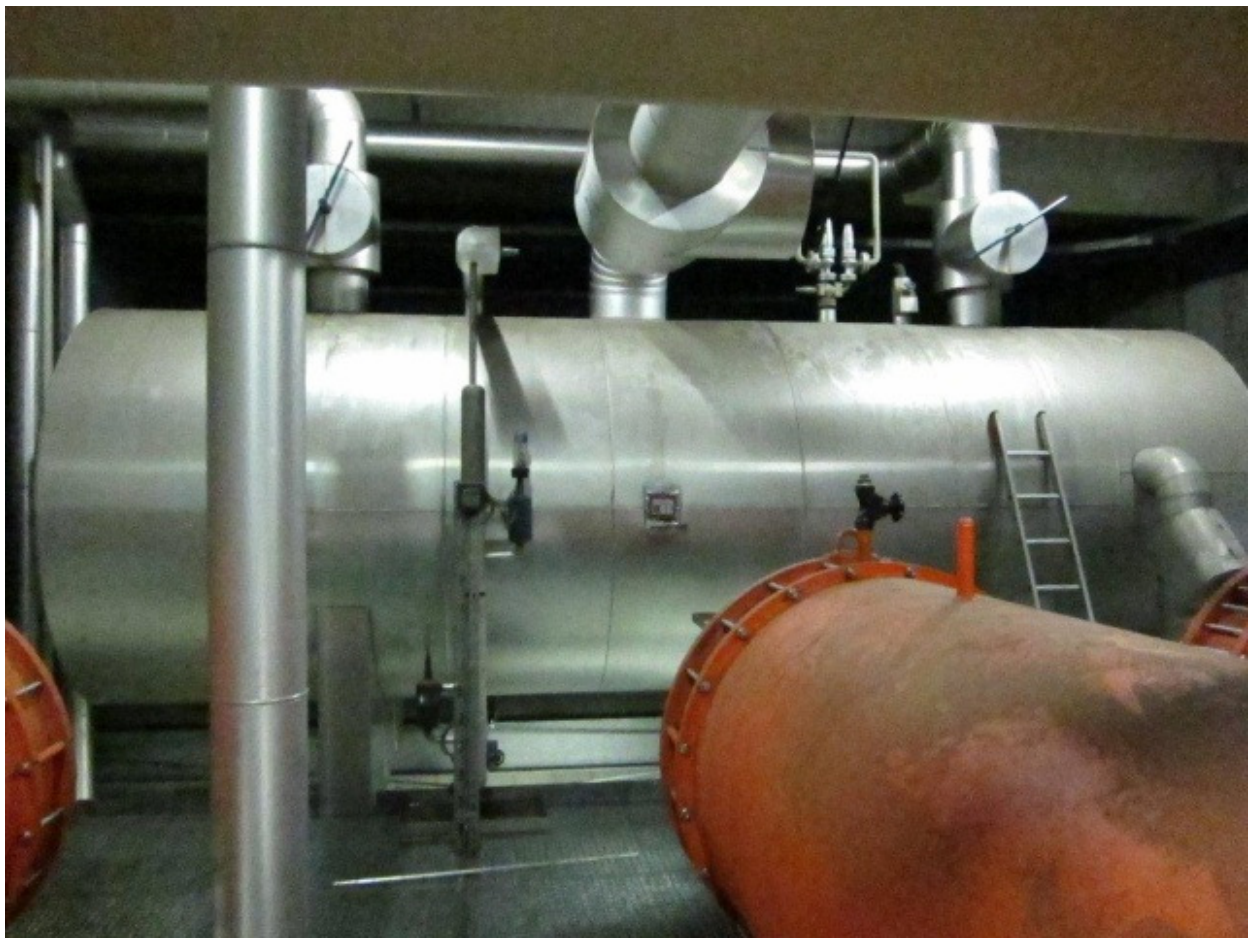
Including: All original documentation, drawings and electric drawings included!











SIEMENS

COROS OP25

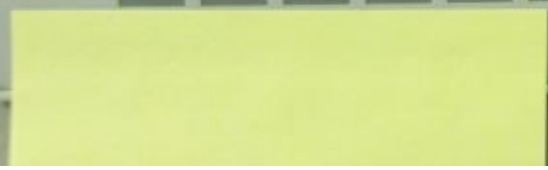
F1
F3
F5
F7

ontdoelingsparameters
383 PLC connection interrupted
and nee nee nee
belucht buiten dienst mode Vlok? ee
leuze? 100%
start1 500 start2 1900 uur ?
stop1 600 stop2 2000 uur ?

F2
F4
F6
F8

A 7 B 8 C 9
G 4 H 5 I 6 J K L
M 1 N 2 O 3 P Q R
S T U V W X
Y Z DEL ESC
A-Z ACK
A-Z
HELP ENTER

K1 F9 F10 F11 F12 F13 F14 K2
K3 K4 K5 K6 K7 K8 K9 K10



CEL D5 E2 E3 Δ6 OP 1K